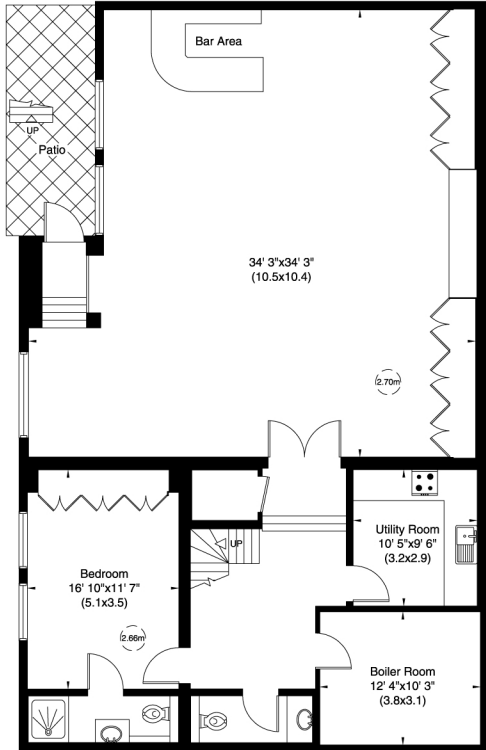
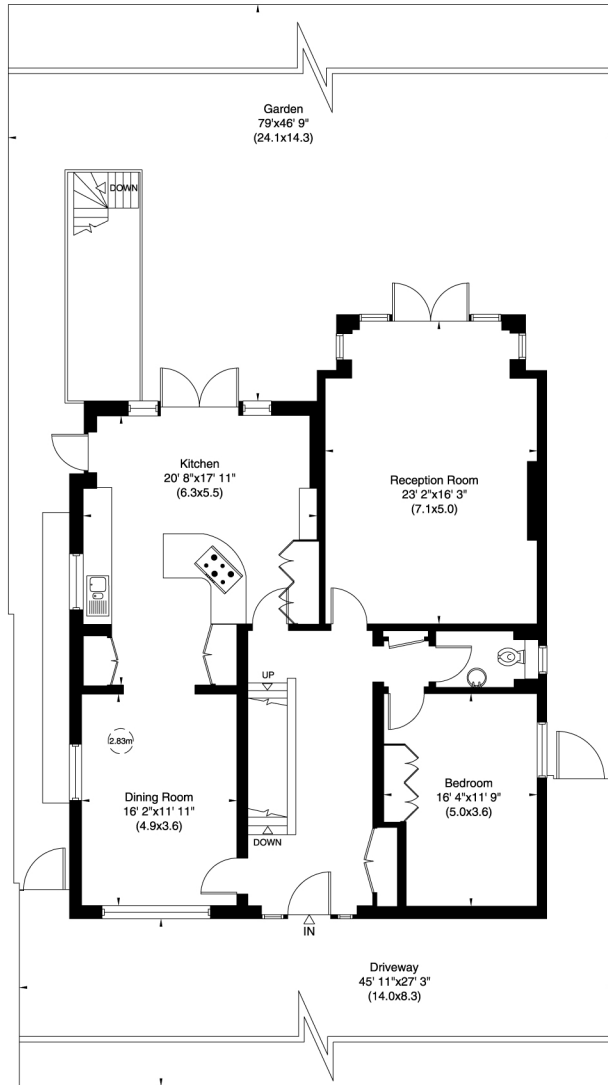


**CHURCH MOUNT
LONDON N2**

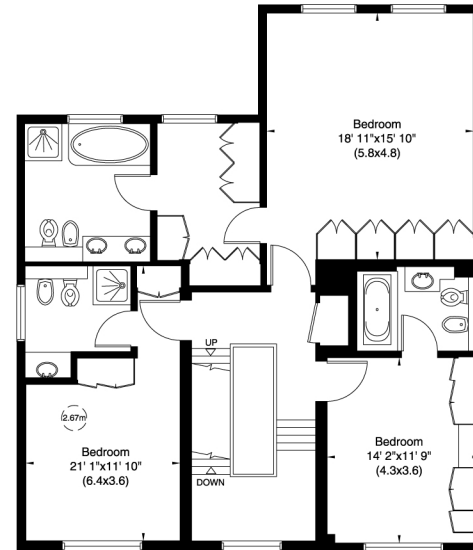
Gross internal area (approx.)
5266 Sq ft (489 Sq m)



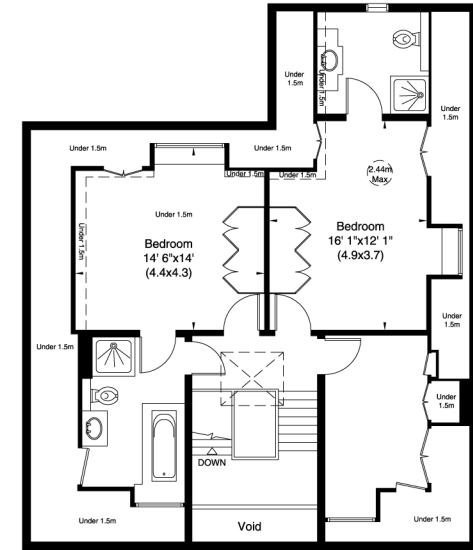
Lower Ground Floor



Upper Ground Floor



First Floor



Second Floor

Not to scale, for guidance only and must not be relied upon as a statement of fact. All measurements and areas are approximate only (and have been prepared in accordance with the current edition of the RICS Code of Measuring Practice).